



Anti-Flag Tag Rabbit Polyclonal Antibody

Catalog No.	EM34015-01	EM34015-02
Size	50 μ l	100 μ l

The DYKDDDDK peptide (Flag-tag) is a small component of an epitope which does not appear to interfere with the bioactivity or the biodistribution of the recombinant protein. It has been used extensively as a general epitope tag in expression vectors. It can be used for affinity chromatography, then used to separate recombinant, overexpressed protein from wild-type protein expressed by the host organism. It can also be used in the isolation of protein complexes with multiple subunits. A Flag-tag can be used in many different assays that require recognition by an antibody. If there is no antibody against the studied protein, adding a Flag-tag to this protein allows one to follow the protein with an antibody against the Flag sequence.

Molecular Weight: N/A

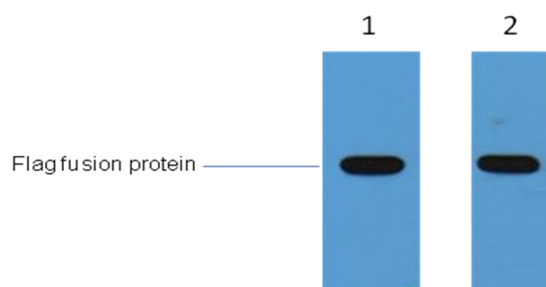
Application : WB 1:5,000 IF 1:200 IP 1:200 Optimal dilutions should be determined by the end user.

Specificity: The Flag tag antibody can recognize C-terminal, internal, and N-terminal Flag-tag fusion proteins.

Form: Liquid ,1mg/ml

Storage buffer: PBS, pH 7.4, containing 0.02% sodium azide as Preservative and 50% Glycerol

Storage: Store at -20°C. Do not aliquot the antibody.



1 μ g Flag fusion protein+ Primary antibody dilution at
1、 1:5,000 2、 1:10,000