



Anti- JNK1 Rabbit Polyclonal Antibody

Catalog No.	EM10288-01	EM10288-02
Size	50µl	100µl

Species reactivity: Human , Moust , Rat **Molecular Weight:** 48kDa

Background: The stress-activated protein kinase/Jun-amino-terminal kinase SAPK/JNK is potently and preferentially activated by a variety of environmental stresses including UV and gamma radiation, ceramides, inflammatory cytokines, and in some instances, by growth factors and GPCR agonists (1-6). As with the other MAPKs, the core signaling unit is composed of a MAPKKK, typically MEKK1-MEKK4, or by one of the mixed lineage kinases (MLKs), which phosphorylate and activate MKK4/7. Upon activation, MKKs phosphorylate and activate the SAPK/JNK kinase (2)

Form: Liquid ,1mg/ml

All Names: MAPK8;JNK;JNK1;JNK1A2;JNK21B1/2;PRKM8;SAPK1

Immunogen: The antiserum was produced against synthesized peptide derived from human JNK1

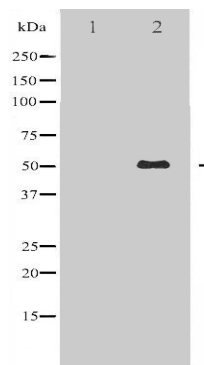
Application: WB: 1:1,000-3000

Optimal dilutions/concentrations should be determined by the end user.

Purification: Immunogen affinity purified

Storage buffer: Rabbit IgG in phosphate buffered saline , pH 7.4, 150mM NaCl, 0.02% sodium azide and 50% glycerol.Store at -20 °C.Stable for 12 months from date of receipt.

Storage: Store at -20°C. Do not aliquot the antibody.



Western blot analysis of extracts of Hela cells using JNK1 antibody.