



EMAR Beijing Emarbio Science & Technology Co.,LTD

anti-GDF-5 Rabbit Polyclonal antibody

Catalog No.	EM11928-01	EM11928-02
Size	50 μ l	100 μ l
Species reactivity:	Human Mouse Rat	Molecular Weight: 55KD

All Names: Growth/differentiation factor 5

Immunogen: Synthesized peptide derived from the Internal region of human GDF-5.

Purification: The antibody was affinity-purified from rabbit antiserum by affinity-chromatography using epitope-specific immunogen.

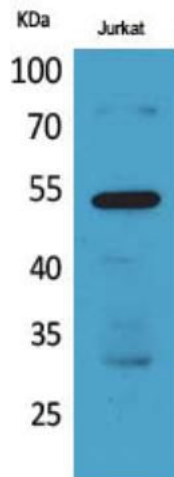
Application: WB 1:500-1:3000 ELISA: 1:20000

Optimal dilutions/concentrations should be determined by the end user.

Form: Liquid ,1mg/ml

Storage buffer: Rabbit IgG in phosphate buffered saline , pH 7.4, 150mM NaCl, 0.02% sodium azide and 50% glycerol. Store at -20 ° C. Stable for 12 months from date of receipt

Storage: Store at -20°C. Do not aliquot the antibody.



Western blot analysis of 293 cells using GDF-5 antibody.

EMAR

EMAR