



anti-GR (Phospho-Ser211) Rabbit Polyclonal antibody

| | | |
|----------------------------|------------------------|--------------------------|
| Catalog No. | EM41041-01 | EM41041-02 |
| Size | 50µl | 100µl |
| Species reactivity: | Human Mouse Rat | Molecular Weight: |

All Names:GCR, GRL, GRL1, NR3C1, glucocorticoid receptor

Immunogen:The antiserum was produced against synthesized phosphopeptide derived from human GR around the phosphorylation site of serine 211 (N-E-S^P-P-W).

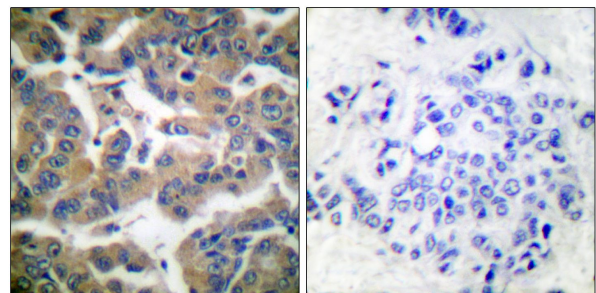
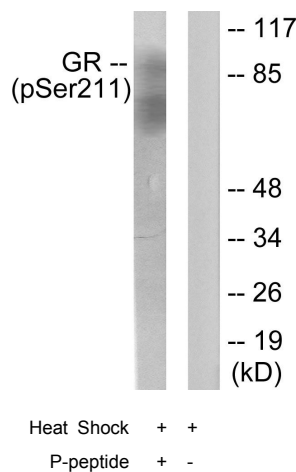
Purification:The antibody was affinity-purified from rabbit antiserum by affinity-chromatography using epitope-specific phosphopeptide. The antibody against non-phosphopeptide was removed by chromatography using non-phosphopeptide corresponding to the phosphorylation site.

Application: **WB 1:500-1:3000 IHC 1:50-1:100 ELISA 1:5000**
Optimal dilutions/concentrations should be determined by the end user.

Form: Liquid ,1mg/ml

Storage buffer: Rabbit IgG in phosphate buffered saline , pH 7.4, 150mM NaCl, 0.02% sodium azide and 50% glycerol.Store at -20 ° C.Stable for 12 months from date of receipt

Storage: Store at -20°C. Do not aliquot the antibody.



Peptide - +

Western blot analysis of extracts from HeLa cells treated with Heat shock, using GR (phospho-Ser211) antibody.

Immunohistochemical analysis of paraffin-embedded human breast carcinoma tissue, using GR (phospho-Ser211) antibody.