



Beijing Emarbio Science & Technology Co.,LTD

anti-Catenin- β (Phospho-Ser37) Rabbit Polyclonal antibody

Catalog No.	EM41652-01	EM41652-02
Size	50 μ l	100 μ l

Species reactivity: Human Mouse Rat **Molecular Weight:** 92KD

Background: Beta-catenin is an adherens junction protein. Adherens junctions (AJs; also called the zonula adherens) are critical for the establishment and maintenance of epithelial layers, such as those lining organ surfaces. AJs mediate adhesion between cells, communicate a signal that neighboring cells are present, and anchor the actin cytoskeleton. In serving these roles, AJs regulate normal cell growth and behavior.

All Names: CATNB, CTNB1, CTNNB, catenin, beta

Immunogen: A synthesized peptide derived from human Catenin- β around the phosphorylation site of Serine 37

Purification: Immunogen affinity purified

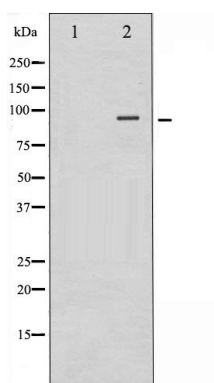
Application: WB 1:500-1:3000 IHC 1:50-1:200

Optimal dilutions/concentrations should be determined by the end user.

Form: Liquid ,1mg/ml

Storage buffer: Rabbit IgG in phosphate buffered saline , pH 7.4, 150mM NaCl, 0.02% sodium azide and 50% glycerol. Store at -20 ° C. Stable for 12 months from date of receipt

Storage: Store at -20°C. Do not aliquot the antibody.



Western blot analysis of Catenin- β phosphorylation expression in 293 whole cell lysates, The lane on the left is treated with the antigen-specific peptide.