



EMAR Beijing Emarbio Science & Technology Co.,LTD

## Anti-GAPDH Mouse Monoclonal Antibody(2A8)

Catalog No.	EM31010-01	EM31010-02
Size	50 $\mu$ l	100 $\mu$ l

Glyceraldehyde 3 phosphate dehydrogenase (GAPDH) is well known as one of the key enzymes involved in glycolysis. GAPDH is constitutively expressed in almost all tissues at high levels, therefore antibodies against GAPDH are useful as loading controls for Western Blotting. Some physiological factors, such as hypoxia and diabetes, increase GAPDH expression in certain cell types.

**Molecular Weight:** 37KD

**Application :** WB 1:5000 IHC 1:200 Optimal dilutions should be determined by the end user.

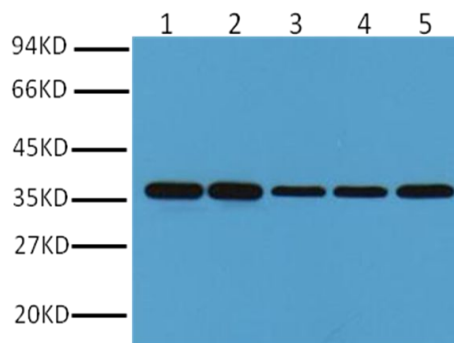
**species reactivity:** Human Rat Mouse Monkey Dog Chicken Hamster Rabbit Pig Sheep

**Specificity:** The GAPDH antibody can detect endogenous GAPDH protein.

**Form:** Liquid ,1mg/ml

**Storage buffer:** PBS, pH 7.4, containing 0.02% sodium azide as Preservative and 50% Glycerol

**Storage:** Store at -20°C. Do not aliquot the antibody.



Western blot analysis of Hela (1), Rat brain (2), Rabbit Muscle(3), Sheep Muscle(4), and Mouse brain (5) with GAPDH mouse mAb(2A8) diluted at 1:10,000.

EMAR

EMAR