



## Anti-PI3-kinase p85-alpha Rabbit Polyclonal Antibody

<b>Catalog No.</b>	<b>EM55473-01</b>	<b>EM55473-02</b>
<b>Size</b>	50µl	100µl

**Species reactivity:** Human Mouse Rat **Molecular Weight:** 85KD

**Background:** PIK3R1 is a regulatory subunit of phosphoinositide-3-kinase. Mediates binding to a subset of tyrosine-phosphorylated proteins through its SH2 domain. Acts as an adapter, mediating the association of the p110 catalytic unit of the alpha, beta and delta enzymes to the plasma membrane, where p110 phosphorylates inositol lipids. May play an additional role in the regulation of the actin cytoskeleton. Necessary for the insulin-stimulated increase in glucose uptake and glycogen synthesis in insulin-sensitive tissues.

**All Names:** GRB1, P85A, PI3-kinase p85-alpha subunit, PI3K, PI3K p85-alpha, Phosphatidylinositol 3-kinase regulatory alpha subunit, PtdIns-3-kinase p85-alpha; P55G, PI3-kinase p85-gamma subunit, PI3K p85-gamma, Phosphatidylinositol 3-kinase regulatory gamma subunit,

**Immunogen:** A synthesized peptide derived from human PI3-kinase p85-alpha

**Specificity:** PI3-kinase p85-alpha Antibody detects endogenous levels of total PI3-kinase p85-alpha

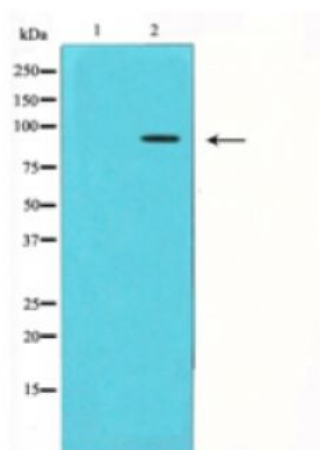
**Application:** WB 1:1000-1:3000

Optimal dilutions/concentrations should be determined by the end user.

**Form:** Liquid ,1mg/ml

**Storage buffer:** PBS, pH 7.4, containing 0.02% *sodium azide* as Preservative and 50% Glycerol.

**Storage:** Store at -20°C. Do not aliquot the antibody.



Western blot analysis of PI3-kinase p85-alpha expression in COS7 whole cell lysates. The lane on the left is treated with the antigen specific peptide.