



Anti- β -tubulin Mouse Monoclonal Antibody(4F2)

Catalog No.	EM31013-01	EM31013-02
Size	50 μ l	100 μ l

Microtubules are constituent parts of the mitotic apparatus, cilia, flagella, and elements of the cytoskeleton. They consist principally of 2 soluble proteins, alpha- and beta-tubulin, each of about 55,000 Da. Antibodies against beta Tubulin are useful as loading controls for Western Blotting. However it should be noted that levels of β -Tubulin may not be stable in certain cells. For example, expression of β -Tubulin in adipose tissue is very low and therefore β -Tubulin should not be used as loading control for these tissues.

Molecular Weight: 55KD

Application : WB 1 : 5,000 IHC 1:200 IF 1:100-200

Optimal dilutions should be determined by the end user.

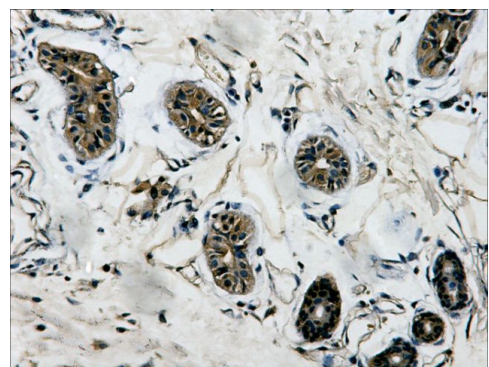
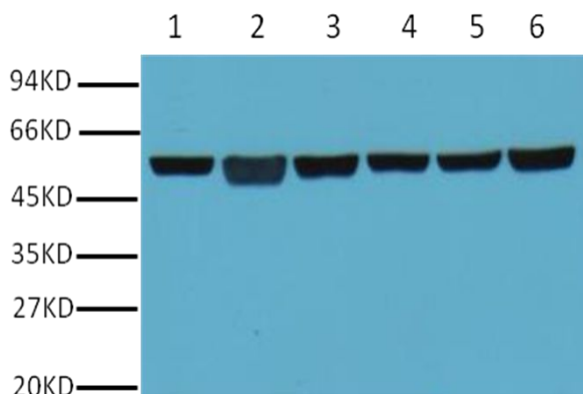
species reactivity: Human Rat Mouse Monkey Dog Cat Hamster Rabbit Sheep

Specificity: The β -tubulin antibody can detect endogenous β -tubulin protein.

Form: Liquid ,1mg/ml

Storage buffer: PBS, pH 7.4, containing 0.02% sodium azide as Preservative and 50% Glycerol

Storage: Store at -20°C. Do not aliquot the antibody.



Western blot analysis of A549 (1) , Rat brain (2) ,Mouse brain (3) ,Chicken lung (4) and Rabbit testis (5),Sheep muscle (6) with β -tubulin mouse mAb diluted at 1:5000.

IHC Staining of Human colon tissue with β -tubulin mouse mAb diluted at 1:200.