



EMAR Beijing Emarbio Science & Technology Co.,LTD

## Anti- $\beta$ I tubulin Mouse Monoclonal Antibody

Catalog No.	EM31026-01	EM31026-02
Size	50 $\mu$ l	100 $\mu$ l

Tubulin is one of several members of a small family of globular proteins. The tubulin superfamily includes five distinct families, the alpha-, beta-, gamma-, delta-, and epsilon-tubulins. The most common members of the tubulin family are  $\alpha$ -tubulin and  $\beta$ -tubulin, the proteins that make up microtubules. Each has a molecular weight of approximately 55 KD. Microtubules are assembled from dimers of  $\alpha$ - and  $\beta$ -tubulin.

**Molecular Weight:** 50KD

**Application :** WB 1:5,000-10,000      Optimal dilutions should be determined by the end user.

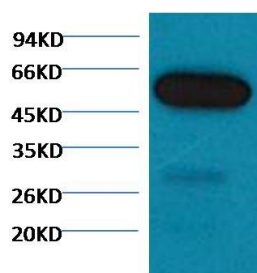
**species reactivity:**Zebrafish

**Specificity:**The  $\beta$  I tubulin antibody can recognize Zebrafish endogenous $\beta$  I tubulin proteins.

**Form:** Liquid ,1mg/ml

**Storage buffer:** PBS, pH 7.4, containing 0.02% sodium azide as Preservative and 50% Glycerol

**Storage:** Store at -20°C. Do not aliquot the antibody.



Western blot analysis of Zebrafish skeletal muscle with  $\beta$  I tubulin diluted at 1:5,000.

EMAR

EMAR