



Anti- β II tubulin Mouse Monoclonal Antibody(Mix)

Catalog No.	EM31204-01	EM31204-02
Size	50 μ l	100 μ l

Tubulin is the major constituent of microtubules. It exists as a heterodimer consisting of an alpha and a beta subunit. Class II beta tubulin is the major form of tubulin beta in neurons, although it is not neuronal specific. It is found in many other tissues including lung tissue and Schwann cells.

Molecular Weight:50KD

Application : WB 1:50,000-100,000 IP 1:200 Optimal dilutions should be determined by the end user.

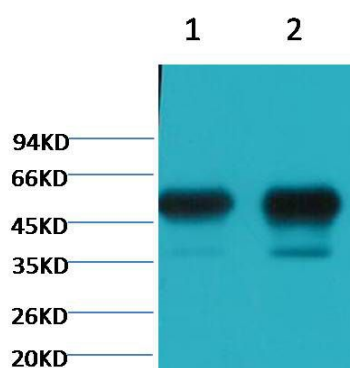
species reactivity:Rodent Preferred Rat Mouse

Specificity:The β II tubulin Mouse Monoclonal Antibody can detects endogenous β II tubulin protein.

Form: Liquid ,1mg/ml

Storage buffer: PBS, pH 7.4, containing 0.02% sodium azide as Preservative and 50% Glycerol

Storage: Store at -20°C. Do not aliquot the antibody.



Western blot analysis of 1) Mouse Brain tissue, 2) Rat Brain tissue with β II tubulin diluted at 1:100,000.