



Beijing Emarbio Science & Technology Co.,LTD

## Anti- $\beta$ -actin Rabbit Polyclonal Antibody

Catalog No.	EM32011-01	EM32011-02
Size	50 $\mu$ l	100 $\mu$ l

$\beta$ -Actin is one of six different actin isoforms that have been identified. The actin molecules found in cells of various species and tissues tend to be very similar in their immunological and physical properties. Therefore, Antibodies against  $\beta$ -Actin are useful as loading controls for Western Blotting. However it should be noted that levels of  $\beta$ -Actin may not be stable in certain cells. For example, expression of  $\beta$ -Actin in adipose tissue is very low and therefore  $\beta$ -Actin should not be used as loading control for these tissues.

**Molecular Weight:**43KD

**Application :** WB 1:3,000 IHC 1:200 IF 1:200 Optimal dilutions should be determined by the end user.

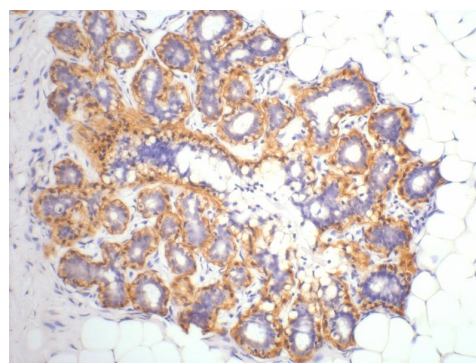
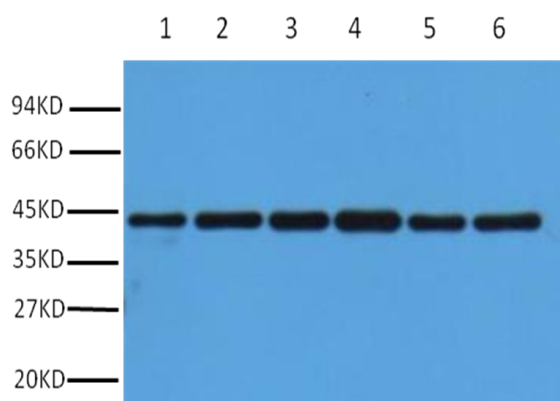
**species reactivity:**Human Rat Mouse Monkey Chicken Hamster Sheep Xenopus

**Specificity:**The  $\beta$ -actin Rabbit Polyclonal Antibody can detects endogenous  $\beta$ -actin protein.

**Form:** Liquid ,1mg/ml

**Storage buffer:** PBS, pH 7.4, containing 0.02% sodium azide as Preservative and 50% Glycerol

**Storage:** Store at -20°C. Do not aliquot the antibody.



Western blot analysis of HepG2 (1) , Rat liver (2) ,Mouse kidney (3) , Rabbit testis(4), Sheep lung(5), 293T(6) with  $\beta$ -Actin PAB antibody diluted at 1:5000. IHC staining of Human ovary tissue with  $\beta$ -Actin PAB diluted at 1:200.