



## Anti-HSV Tag Mouse Monoclonal Antibody(P6)

Catalog No.	EM33033-01	EM33033-02
Size	50μl	100μl

HSV-tag peptide QPELAPEDPED conjugated to KLH. HSV- Tag antibody can recognize C-terminal, internal, and N-terminal HSV-tagged proteins.

**Molecular Weight:** N/A

**Application :** WB 1:5,000-10,000 Optimal dilutions should be determined by the end user.

**Specificity:**The HSV tag antibody can recognize HSV tag fusion proteins.

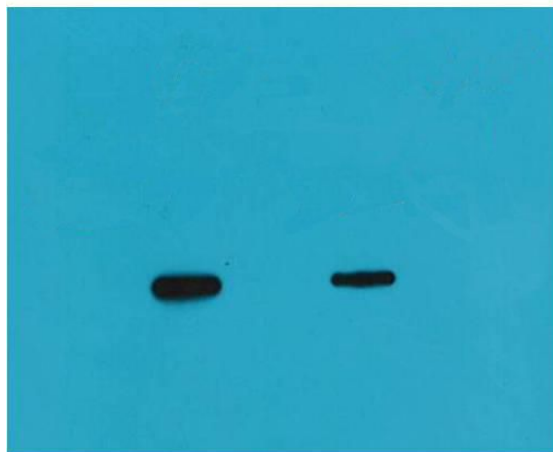
**Form:** Liquid ,1mg/ml

**Storage buffer:** PBS, pH 7.4, containing 0.02% sodium azide as Preservative and 50% Glycerol

**Storage:** Store at -20°C. Do not aliquot the antibody.

EMAR

1 2



Western blot analysis of Recombinant protein with HSV Mouse mAb diluted at  
1) 1:5,000 2) 1:10,000

EMAR